

PRODUCT INFORMATION

A single board for: • **Render Coat Finish** • **Trowelled Finish** • **Painted Finish** • **Clear Raw Concrete Finish**

INEX>RENDERBOARD is a revolutionary, low carbon, high strength, yet lightweight cement based interior and exterior wall cladding suitable for both residential and commercial applications. At only 16mm thick and being able to be fixed to battens or top hats at a minimum thickness of 25mm. **INEX>RENDERBOARD** offers exceptional space saving façade options, even when a fire resistance FRL or acoustic insulation is required. **INEX>RENDERBOARD** has a tongue and groove joint down each long side for a flush tight fit and to minimise any later joint cracking.

INEX>RENDERBOARD is a **multi-purpose product** enabling a wide choice of applications or expressions. The smooth side finished surface provides a minimum CLASS 2 concrete surface (AS 3610) and comes with an arris to create a 'V' joint along the long edges. This side can be either coated with a number of paint systems of varying textures, or clear finished to retain the characteristic raw concrete look of **INEX>RENDERBOARD**. During installation the tongue and groove joint must be filled with a bead of construction sealant/adhesive. After installation the 'V' joint does not require sealing and it is up to the user/installer to decide whether to simply paint through this joint or fill it with a suggested paintable sealer prior to application of the paint or finishing system. The rough side of **INEX>RENDERBOARD** provides a textured finish for multiple render coat or trowelled-on systems.



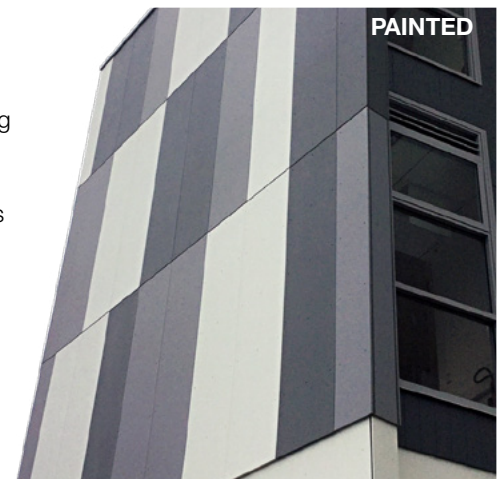
General Information

Product	Length(mm)	Width(mm)	Thickness(mm)	kg/m ²	kg/Sheet
INEX>RENDERBOARD	3000	600	16	22.4	40
INEX>RENDERBOARD	2700	600	16	22.4	36

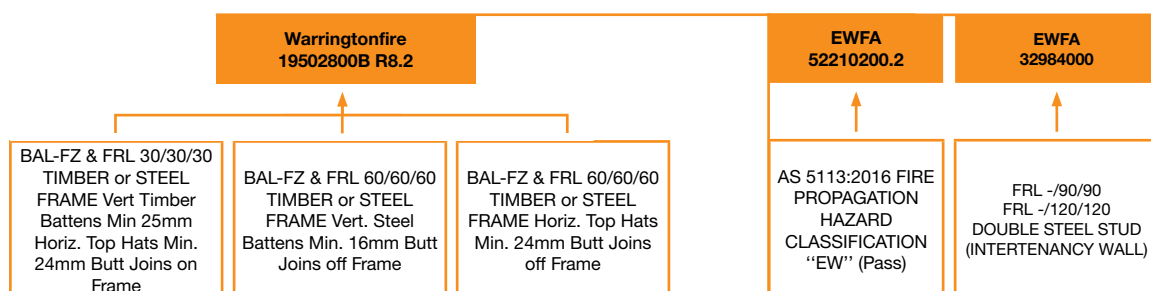
FOR ALL APPLICATIONS, INEX>RENDERBOARD MUST BE SEALED & COATED

Advantages:

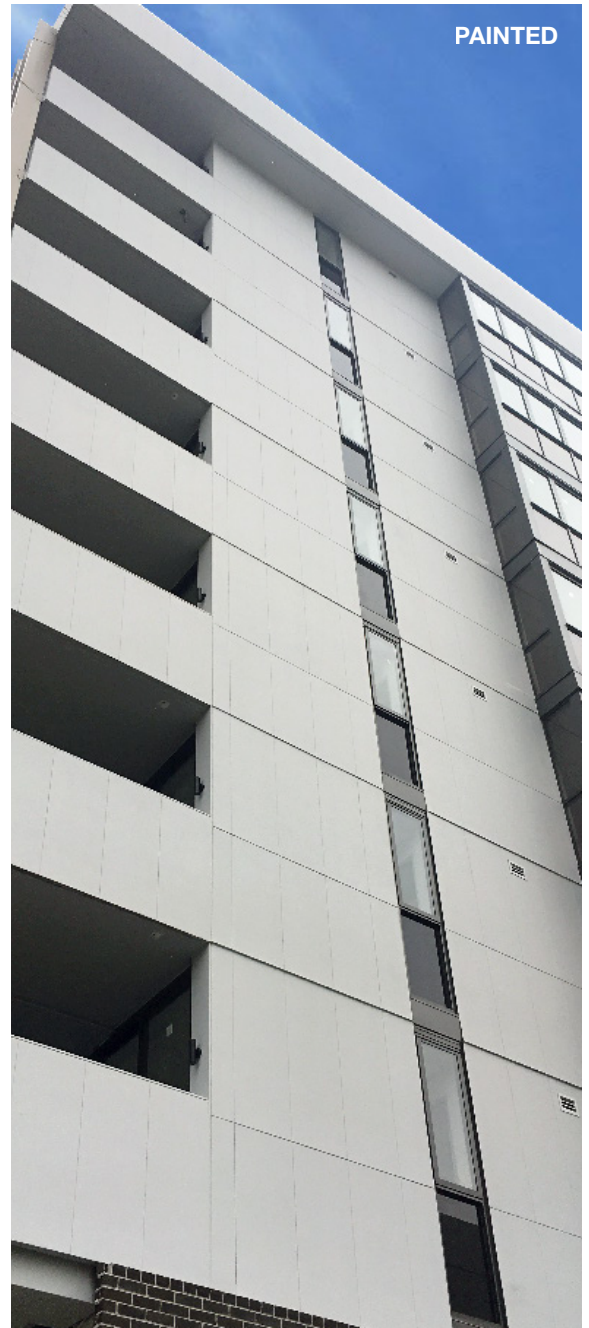
- **INEX>RENDERBOARD** can be cut and worked just like comparable fibre cement sheets, but offers improved bending strength characteristics and a quality finish.
- **INEX>RENDERBOARD** does not require any speciality tools or fixings.
- **INEX>RENDERBOARD** systems can be fixed to timber or steel studs with spacing at maximum 600mm centres. (See installation details for FRL requirements)
- **INEX>RENDERBOARD** is non-combustible as tested by AS1530.1. It is approved for bushfire BAL-FZ construction and is certified to Fire Resistance Levels of FRL 30/30/30 or FRL 60/60/60.
- **INEX>RENDERBOARD** is resistant to mould and termite attack.
- **INEX>RENDERBOARD** is water resistant, but all times requires a coating system to be applied.
- **INEX>RENDERBOARD** is an advanced high strength, low carbon fibre reinforced Engineered Cementitious Composite (ECC) product, containing 60% of post industrial recycled materials. It is toxin free, asbestos free and is 100% recyclable.
- **INEX>RENDERBOARD** contains less than 1% crystalline silica.



Warringtonfire and/or CSIRO Fire Assessments for INEX>RENDERBOARD



Meets AS 3959-2018 Section 9 (BAL-FZ) via testing to AS 1530.4-2014



Advantages cont.:

- **INEX>RENDERBOARD** on a timber frame with R2.5 insulation and 10mm plasterboard internal lining will deliver a sound insulation value of R_w/R_w+Ctr of 47/38. Insulation value will be higher (56/45) with a steel frame which will satisfy all Categories of Transport Noise Corridors for external wall requirements.
- **INEX>RENDERBOARD** is priced for value for the construction industry and competes strongly against all comparable products.
- **INEX>RENDERBOARD** is long-term durable and is warranted for 20 years.

AS 1530 series & AS/NZS 3837 (Combustibility, etc.)

FNC12063 EWFA 312153-00a	FNE12018	EWFA 25902-01a.2 EWFA 25902-01b.2 EWFA 25902-01d.1
↑	↑	↑
AS 1530.1 NON-COMBUSTIBLE AS 1530.2 FLAMABILITY	AS 1530.3 NON-IGNITABILITY	AS/NZS 3837-1998 BCA SpecA2.4 GROUP 1
INEX>BOARDS (All Products)		

IMPORTANT NOTE:

1. CLEAR FINISH Information

Whilst **INEX>RENDERBOARD** is primarily used as a cladding product for a seamless render coat or painted finish, it can also be treated with a clear finish to retain its raw concrete appearance. Due to the cementitious nature of **INEX>BOARDS** some superficial pin holing may occur and the smooth side is characterised as CLASS 2 concrete finish. To assist specifiers and installers to achieve the best outcome for **INEX>RENDERBOARD** with a clear finish, the specific documents are provided under the 'COATINGS' section of our website.

2. WARRANTY Information

Common installation errors that will void your warranty include, but are not limited to: failing to properly seal screw holes and incorrect distance between studs. UBIQ does not provide warranty for any suggested coating systems for **INEX>RENDERBOARD**.

3. COATING WARRANTY Information

The purchaser must contact the coating suppliers for warranty purposes. The purchaser accepts all risk associated with performance of any coatings applied to **INEX>RENDERBOARD**. UBIQ recommends the coatings are tested **prior to** installation.

INEX > RENDERBOARD™

PHYSICAL PROPERTIES

DIMENSIONAL AND GEOMETRICAL CHARACTERISTICS			
GEOMETRICAL TESTS	EQUILIBRIUM CONDITION		STANDARD
Length/Width/Thickness	PASS		AS/NZS 2908.2-2000
Straightness & Squareness	PASS		AS/NZS 2908.2-2000
PHYSICAL CHARACTERISTICS			
APPARENT DENSITY TEST	kg/m ³		STANDARD
16mm INEX > RENDERBOARD	1400		AS/NZS 2908.2 - Clause 5.2.2 - test method 8.1.2.2
<i>Condition: Mass determined by drying out the test specimens in a ventilated oven maintained at 100°C for 24 hrs.</i>			
STRENGTH			
CHARACTERISTIC TYPE TEST	DRY CONDITION	WET CONDITION	STANDARD
Bending Strength (Mean)	>12MPa	>12MPa	AS/NZS 2908.2 - Clause 6.1 - test method 8.2.1
Classification - Type		A*	AS/NZS 2908.2-2000
Category		5	AS/NZS 2908.2-2000
Modulus of Elasticity	>8GPa	>6GPa	AS 1774.31.1-2000
<i>*Type A – is intended for external applications where it may be subjected to the direct action of sun, rain and/or snow.</i>			
DURABILITY, MOISTURE RESISTANCE AND CORROSION			
CHARACTERISTIC TYPE TEST			STANDARD
Water Permeability	PASS		AS/NZS 2908.2 - clause 6.2 - test method 8.2.2
Frost Resistance	PASS		AS/NZS 2908.2 - clause 6.3 - test method 8.2.3
Heat-rain	PASS		AS/NZS 2908.2 - clause 6.5 - test method B.5
Soak-dry	PASS		AS/NZS 2908.2 - clause 6.6 - test method 8.2.5
Corrosion	Corrosion Tests undertaken by SGS Australia Pty. Ltd. and demonstrate that INEX > RENDERBOARD does not accelerate corrosion on class 3 or higher metal fasteners & fixings.		
THERMAL PROPERTIES			
CHARACTERISTIC TYPE TEST			STANDARD
Thermal Conductivity	0.179 W/m.K		AS/NZS 4859.1-2002
R-Value at 16mm Thickness	0.09 m ² .K/W		AS/NZS 4859.1-2002
R-Value (typical wall system)	3.18 m ² .K/W		Building Code of Australia – Specification J.1 Assumes R2.5 thermal insulation, minimum 16mm cavity & 10mm plasterboard internal lining.
Flammability Index	1		AS 1530.2-1993
Ignitability Index	0		AS/NZS 1530.3-1999
Spread of Flame Index	0		AS/NZS 1530.3-1999
Heat Evolved Index	0		AS/NZS 1530.3-1999
Smoke Developed Index	1		AS/NZS 1530.3-1999
Material Group Number	1		AS/NZS 3837-1998 / BCA Spec. A2.4
Combustibility	PASS - Not deemed Combustible		AS 1530.1-1994 - clause 3.4 & AS/NZS 3837-1998 Building Code of Australia - Specification A2.4
Bush Fire Attack Level "BAL-40"	PASS		AS 1530.8.1-2007
Bush Fire Attack Level "BAL-FZ"	PASS		AS 1530.4-2005 & AS 3959-2009
Wall System - Fire Propagation Hazard	PASS		AS 5113:2016
Wall System - FRL -/90/90	PASS		AS 1530.4-2005
OTHERS			
MATERIAL TEST			STANDARD / METHOD
Crystalline Silica Content	<0.5%		Raw materials specification
Asbestos	PASS - Asbestos Free		AS 4964-2004
Fungal Resistance	PASS - No growth		ASTM C1338-08
VOC Emission	Very Low (0.053mg/m ² /hr)		ASTM D5116
WET WEATHER & WEATHERPROOFING			STANDARD / METHOD
Wall System with Vert. Battens	PASS		BCA V2.2.1 & AS/NZS4284
Wall System with Top Hats	PASS		BCA V2.2.1 & AS/NZS4284



UBIQ

INEX > **BOARDS**™

FLOORING & CLADDING SOLUTIONS

VISIT

www.ubiq.au

CALL

Sydney +61 2 9519 4460

EMAIL

sales@ubiq.au

This brochure was produced on May 2nd, 2023 and was current to information at that time.

UBIQ Pty Ltd is continually updating its brochure and install material.

We advise all enquires to source the most current brochures and/or technical material available online at www.ubiq.au.