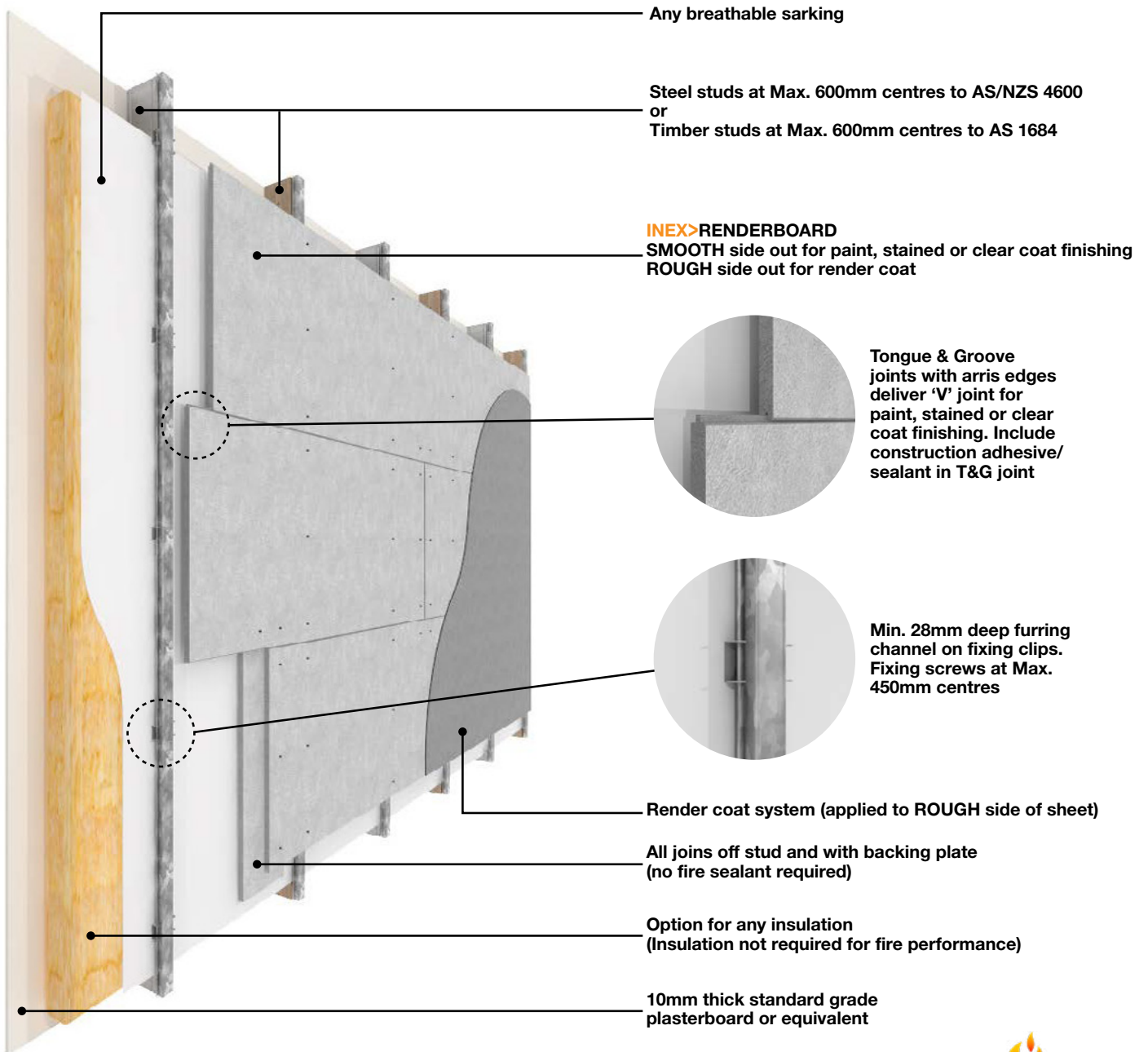


INEX>RENDERBOARD

TIMBER OR STEEL FRAME WITH HORIZONTAL SHEETS : FRL 60/60/60 & BAL-FZ

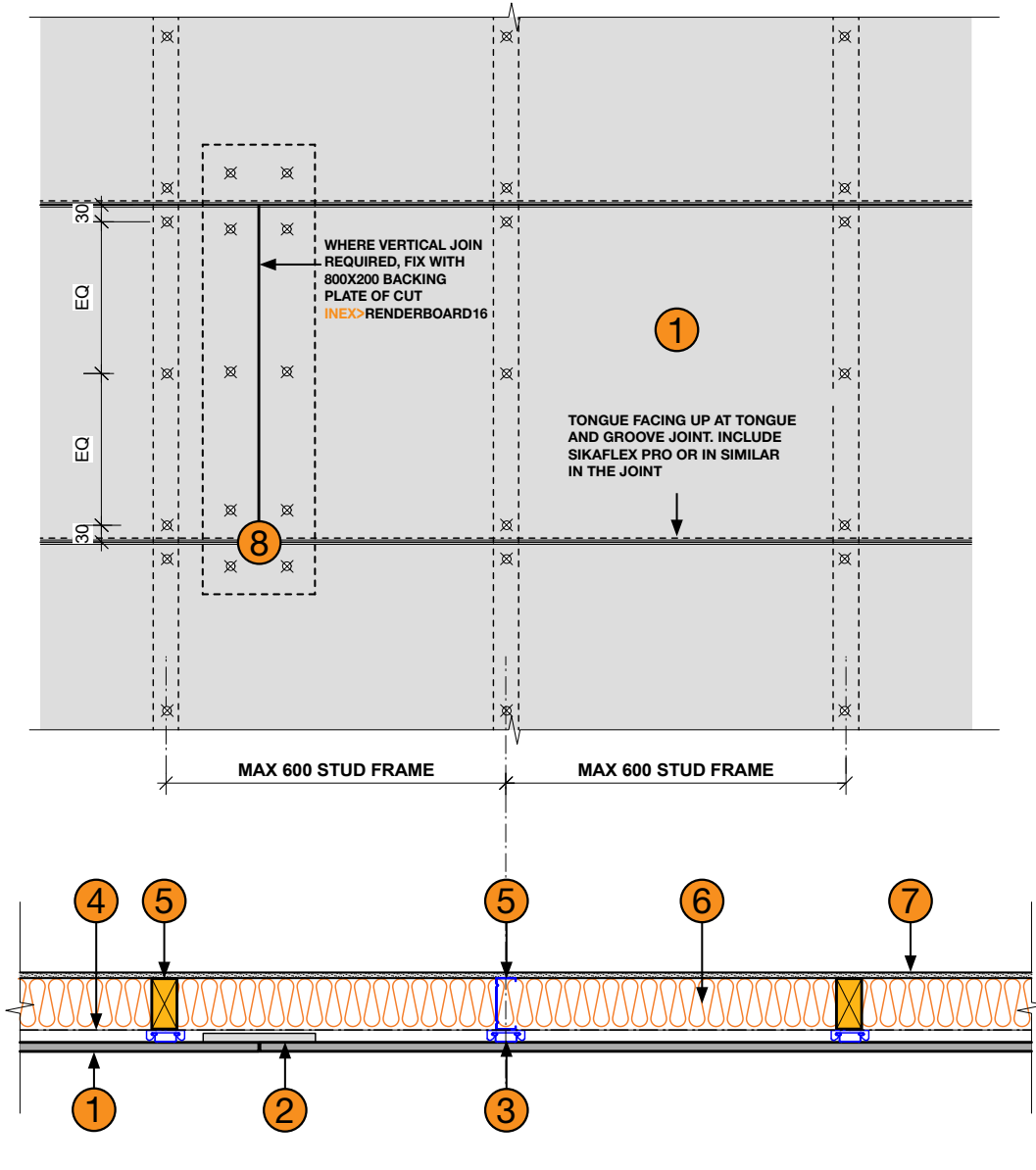


Achieves FRL 60/60/60 from outside only when tested to AS 1530.4-2014
Meets AS 3959-2018 Section 9 (BAL-FZ) via testing to AS 1530.4-2014



INEX>RENDERBOARD

TIMBER OR STEEL FRAME WITH HORIZONTAL SHEETS : FRL 60/60/60 & BAL-FZ



- 1** INEX>RENDERBOARD16
- 2** 800x200 Backing plate (Cut from INEX>BOARDS)
- 3** Min. 28mm steel furring channel, on proprietary fixing clips. Fixing screws at Max. 450mm centres
- 4** Any breathable sarking
- 5** Steel studs at Max. 600mm centres to AS/NZS 4600 or Timber studs at Max. 600mm centres to AS 1684 (Both drawn)
- 6** Any insulation (Insulation not required for fire performance)
- 7** 10mm thick standard grade plasterboard or equivalent
- 8** 10g Min. class 3 galvanised self driller counter sinking screws
BREMICK SWRC3100352
or
BREMICK vortexfibre SURC3500302

NOTES
Refer also to INEX>RENDERBOARD Technical Sheet for fixing details