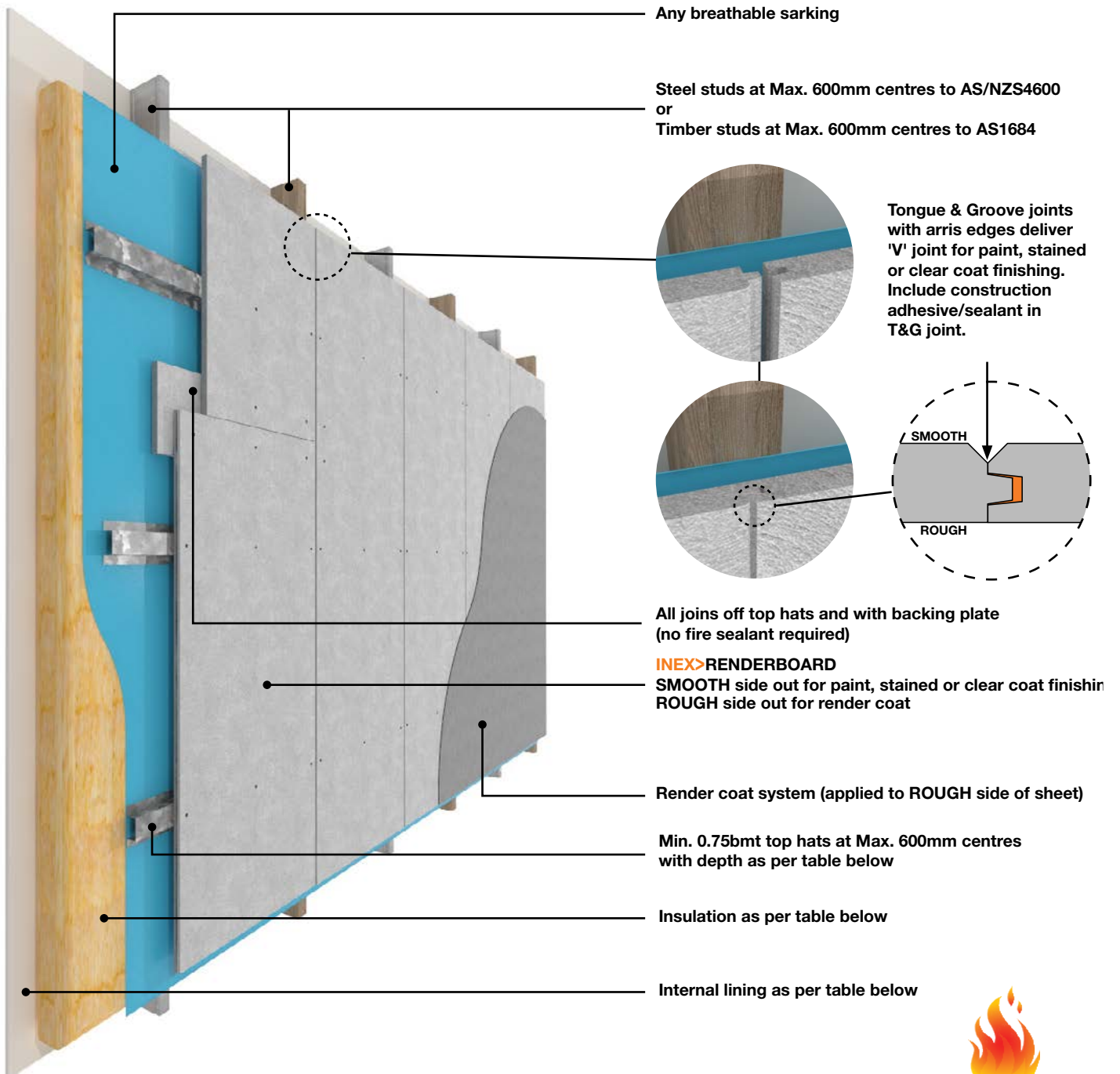


INEX> RENDERBOARD™

TIMBER OR STEEL FRAME WITH VERTICAL SHEETS: FRL 60/60/60 & BAL-FZ



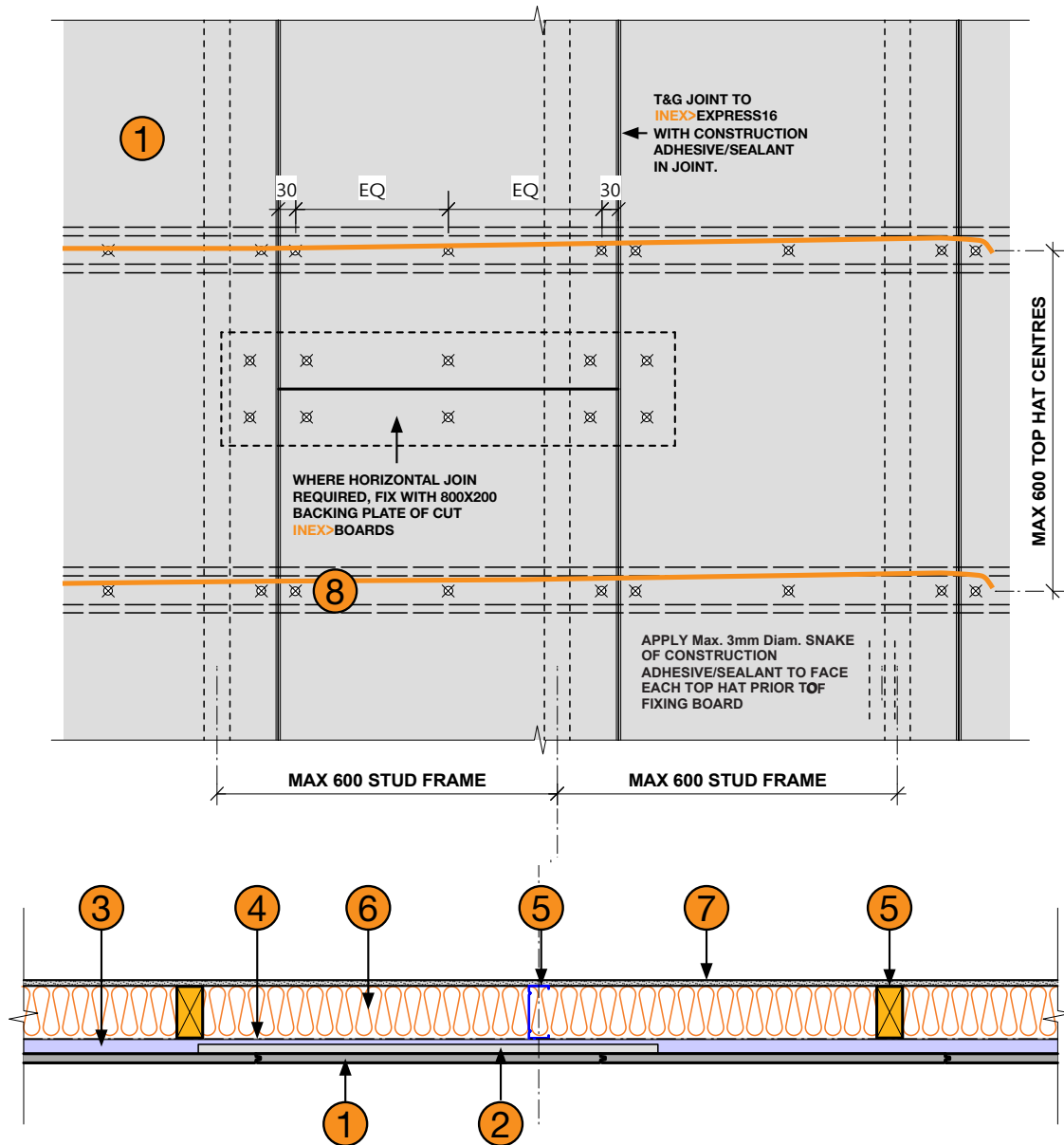
Achieves FRL 60/60/60 from outside only when tested to AS 1530.4-2014
Meets AS 3959-2018 Section 9 (BAL-FZ) via testing to AS 1530.4-2014



Top Hat Depth (mm)	Rondo Top Hat	Insulation	Internal Lining
25	M525	Min. R2.5 Glasswool	Min. 13mm standard grade plasterboard
35	M535		Min. 10mm standard grade plasterboard
40 or greater	M545 or deeper	Any	

INEX> RENDERBOARD™

TIMBER OR STEEL FRAME WITH VERTICAL SHEETS: FRL 60/60/60 & BAL-FZ



- | | |
|---|--|
| <p>1 INEX>RENDERBOARD16</p> <p>2 800x200 Backing plate (Cut from INEX>BOARDS)</p> <p>3 Min. 0.75bmt top hats at Max. 600mm centres with depth as per table overleaf</p> <p>4 Any breathable sarking</p> | <p>5 Steel studs at Max. 600mm centres to AS/NZS4600 or Timber studs at Max. 600mm centres to AS1684 (Both drawn)</p> <p>6 Insulation as per table overleaf</p> <p>7 Internal lining as per table overleaf</p> <p>8 10g Min. class 3 galvanised self driller counter sinking screws
BREMICK SWRC3100352
or
BREMICK vortexfibre SURC3500302</p> |
|---|--|
- NOTES**
Refer also to INEX>RENDERBOARD Technical Sheet for fixing details