

## WHICH EXTERNAL WALL SYSTEM

When choosing which external wall system to adopt there are 4 main factors to consider:

- How much valuable space does the wall take up?
- How much will it cost and how long will it take to build?
- What about its fire, acoustic or thermal insulation?
- Finally, how good will it look and feel and how long will it last?

To assist you in your decision process this document (below and overleaf) compares the **INEX>RENDERBOARD** external wall system to both a comparable Autoclaved Aerated Concrete (AAC) system and a typical brick veneer wall.

Through the twin drivers of affordability and planning controls Australian homes are getting smaller. Lot sizes are reducing and internal space v building footprint now matters.

**INEX>RENDERBOARD** delivers an external wall system only 137mm thick, or at least 60mm thinner than a typical AAC wall system.

At over 120mm thinner than a typical brick veneer wall this produces up to 10 square meters more internal area to a family home.

This 10 square meters could be an additional bedroom.

### SPACE

Bricks are; expensive, weather dependant, time consuming and impose a greater load on footings.

The cost of materials delivered to site of **INEX>RENDERBOARD** and AAC wall systems are near comparable.

At 32kg per sheet **INEX>RENDERBOARD** is less than half the weight of AAC panels. With its T&G edges it can be off stud joined for minimised waste.

Time and labour is cost. **INEX>RENDERBOARD** can be assembled in a fraction of the time and labour than other external wall systems.

### COST

**INEX>RENDERBOARD's** unique formulations mean that at only 16mm thick it can deliver an acoustic performance to comparable 75mm AAC wall system.

Using only 18kg/m<sup>3</sup> R2.5 Knauf Earthwool E4332 Batts and with a steel frame construction

**INEX>RENDERBOARD** walls deliver a sound reduction index of Rw+Ctr 54.

With this same insulation **INEX>RENDERBOARD** external walls achieve a thermal performance of R-value 3.39 and BAL-FZ or FRL 60/60/60 fire ratings.

### PERFORMANCE

**INEX>RENDERBOARD** is effectively a 16mm thick lightweight pre-cast concrete panel. With its T&G + Recessed joints and textured surface it is specifically designed for render, texture or paint coat systems that feel like a solid wall and resist cracking at the joints or deterioration over time.

With minimal chips and cracks occuring during construction **INEX>RENDERBOARD** delivers a stunning final finished rendered, textured or paint coat.

Multiple coating systems have been approved and UBIQ warrants **INEX>RENDERBOARD** for a period of 20 years.

### QUALITY

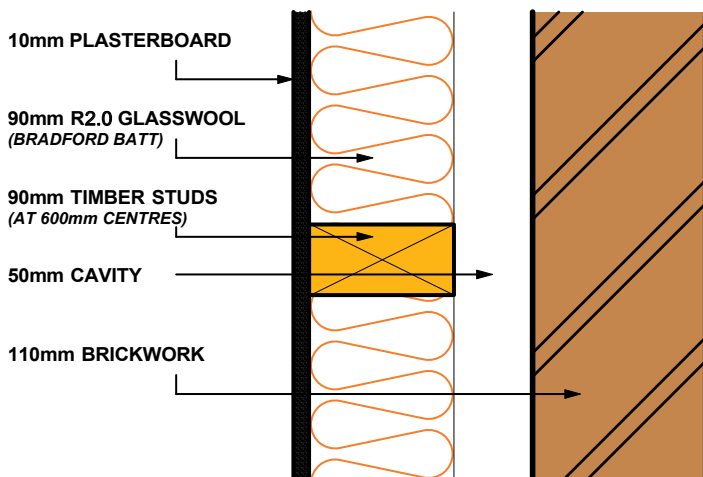
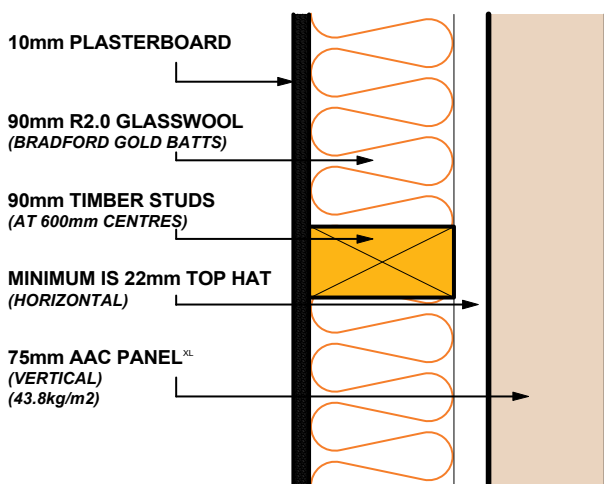
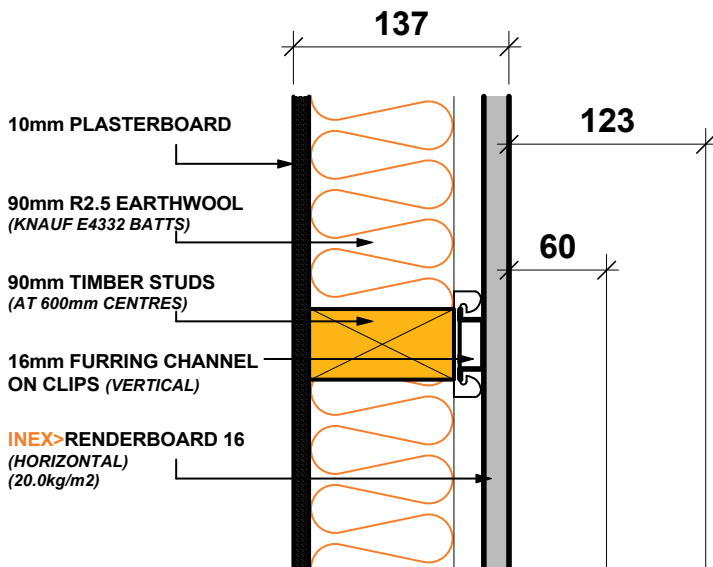
## THE FOUR PILLARS OF CHOICE



The finished quality is paramount.

**INEX>RENDERBOARD** delivers a flawless rendered surface. With its tongue and groove joints it is designed to resist cracking due to differential substrate movement over time.

## WHICH TIMBER FRAME SYSTEM



### INEX>RENDERBOARD™

(BAL-FZ & FRL 60/60/60)

Thickness (mm)	<b>137</b>
Acoustic (Rw/Rw+Ctr)	<b>54/45</b>
R-Value min. (Winter/Summer)	<b>3.39/3.06</b>
BAL-FZ or FRL 60/60/60	<b>Yes</b>

### AAC PANEL SYSTEM

(CSR for Hebel PowerPanel: Test ATF 1460)

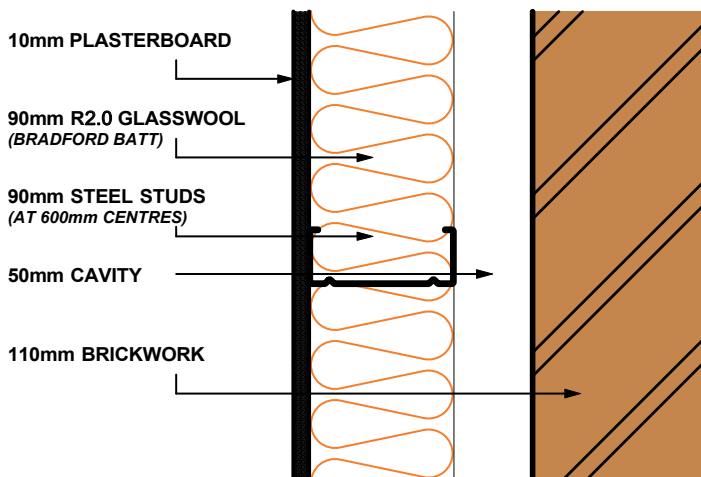
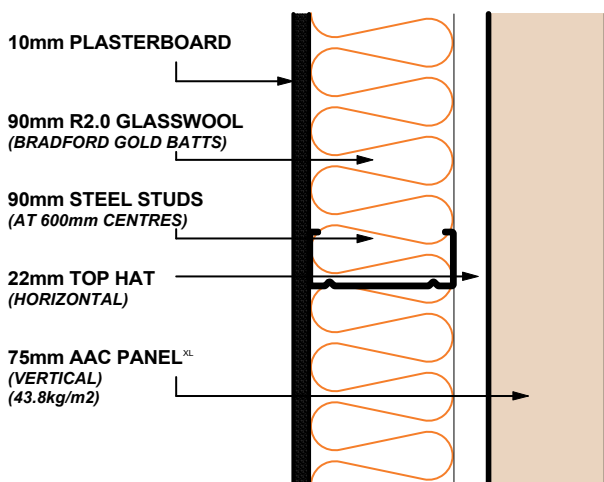
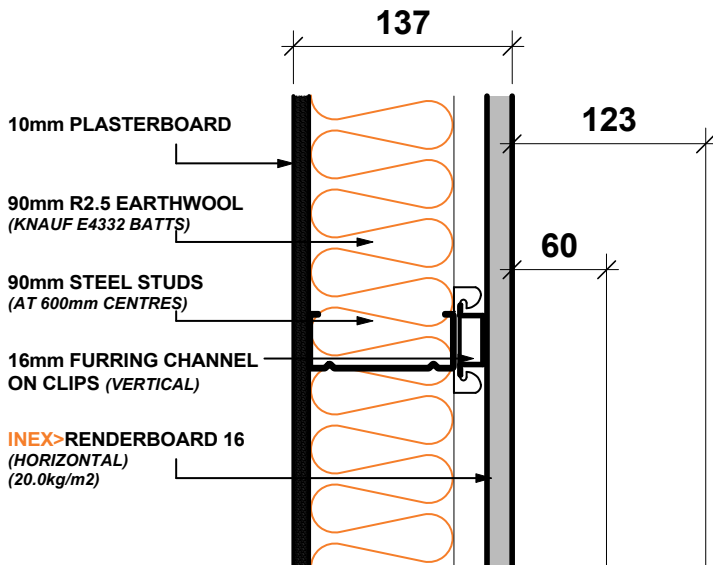
Thickness (mm)	<b>197</b>
Acoustic (Rw/Rw+Ctr)	<b>45/36</b>
R-Value min. (Winter/Summer)	<b>3.15/2.94</b>
BAL-FZ or FRL 60/60/60	<b>Yes</b>

### BRICK VENEER

(TYPICAL)

Thickness (mm)	<b>260</b>
Acoustic (Rw/Rw+Ctr)	<b>57/49</b>
R-Value min. (Winter/Summer)	<b>3.27/3.06</b>
BAL-FZ or FRL 60/60/60	<b>Yes</b>

## WHICH STEEL FRAME SYSTEM



### INEX>RENDERBOARD™

(BAL-FZ & FRL 60/60/60)

Thickness (mm)	<b>137</b>
Acoustic (Rw/Rw+Ctr)	<b>54/45</b>
R-Value min. (Winter/Summer)	<b>3.39/3.06</b>
BAL-FZ or FRL 60/60/60	<b>Yes</b>

### AAC PANEL SYSTEM

(CSR for Hebel PowerPanel: Test ATF 1460)

Thickness (mm)	<b>197</b>
Acoustic (Rw/Rw+Ctr)	<b>45/36</b>
R-Value min. (Winter/Summer)	<b>3.15/2.94</b>
BAL-FZ or FRL 60/60/60	<b>Yes</b>

### BRICK VENEER

(TYPICAL)

Thickness (mm)	<b>260</b>
Acoustic (Rw/Rw+Ctr)	<b>57/49</b>
R-Value min. (Winter/Summer)	<b>3.27/3.06</b>
BAL-FZ or FRL 60/60/60	<b>Yes</b>



**UBIQ**

**INEX** > **BOARDS**™

FLOORING & CLADDING SOLUTIONS

VISIT

[www.ubiq.au](http://www.ubiq.au)

CALL

Sydney +61 2 9519 4460

EMAIL

[sales@ubiq.au](mailto:sales@ubiq.au)

This brochure was produced on May 8th, 2023 and was current to information at that time.

UBIQ Pty Ltd is continually updating its brochure and install material.

We advise all enquires to source the most current brochures and/or technical material available online at [www.ubiq.au](http://www.ubiq.au).