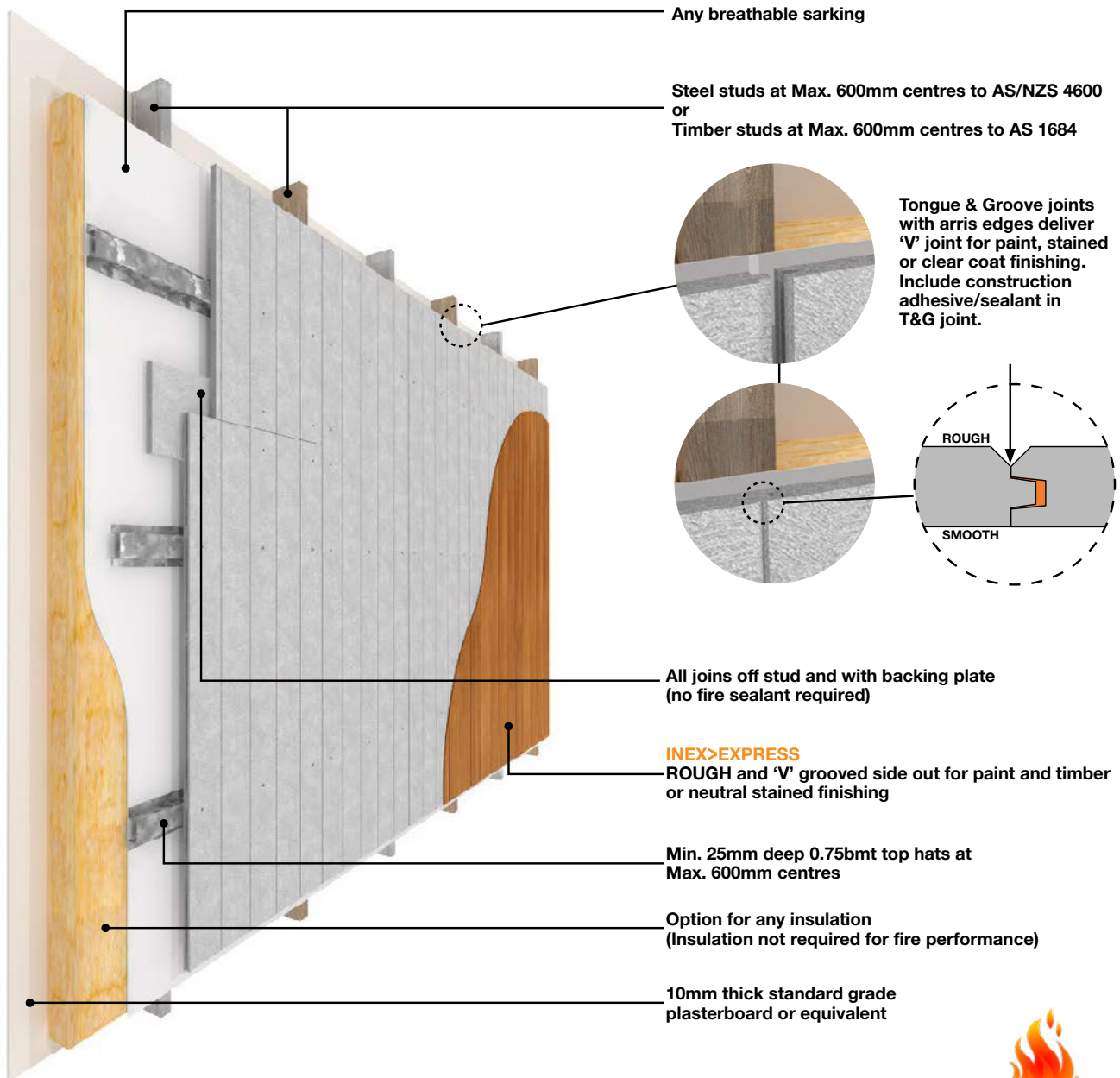


INEX>EXPRESS

TIMBER OR STEEL FRAME WITH HORIZONTAL SHEETS : FRL 30/30/30 & BAL-FZ



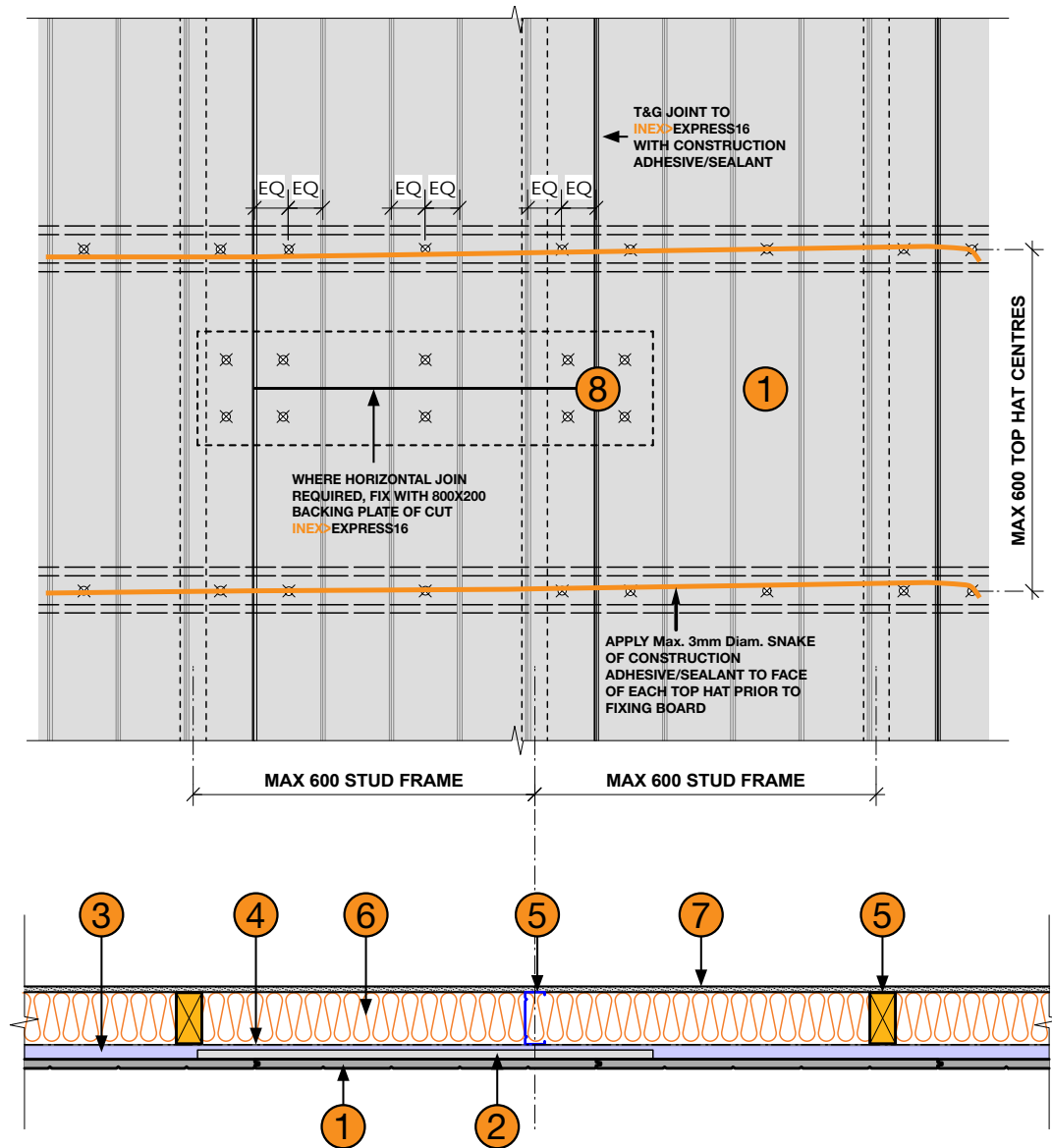
Achieves FRL 30/30/30 from outside only when tested to AS 1530.4-2014
Meets AS 3959-2018 Section 9 (BAL-FZ) via testing to AS 1530.4-2014



INEX>BOARDSTM
FLOORING & CLADDING SOLUTIONS

INEX>EXPRESS

TIMBER OR STEEL FRAME WITH HORIZONTAL SHEETS : FRL 30/30/30 & BAL-FZ



- | | |
|--|---|
| <p>1 INEX>EXPRESS16</p> <p>2 800x200 Backing plate (Cut from INEX>BOARDS)</p> <p>3 Min. 25mm deep 0.75bmt top hats at Max. 600mm centres</p> <p>4 Any breathable sarking</p> | <p>5 Steel studs at Max. 600mm centres to AS/NZS 4600 or Timber studs at Max. 600mm centres to AS 1684 (Both drawn)</p> <p>6 Any insulation (Insulation not required for fire performance)</p> <p>7 Min. 10mm thick standard grade plasterboard</p> <p>8 10g Min. class 3 galvanised self driller counter sinking screws
BREMICK SWRC3100352
or
BREMICK vortexfibre SURC3500302</p> |
|--|---|

NOTES
Refer also to INEX>EXPRESS Technical Sheet for fixing details