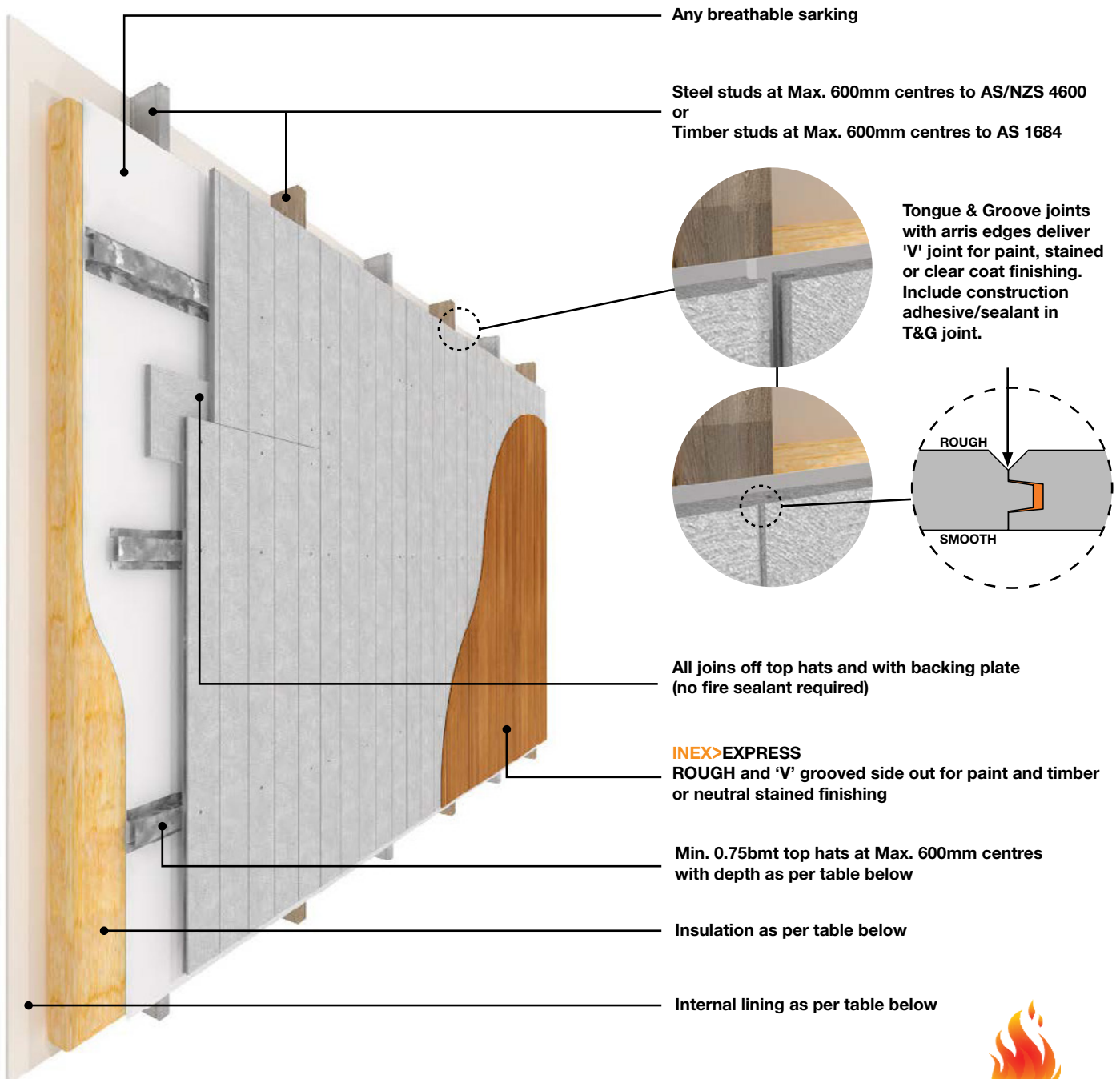


INEX>EXPRESS™

TIMBER OR STEEL FRAME WITH VERTICAL SHEETS: FRL 60/60/60 & BAL-FZ



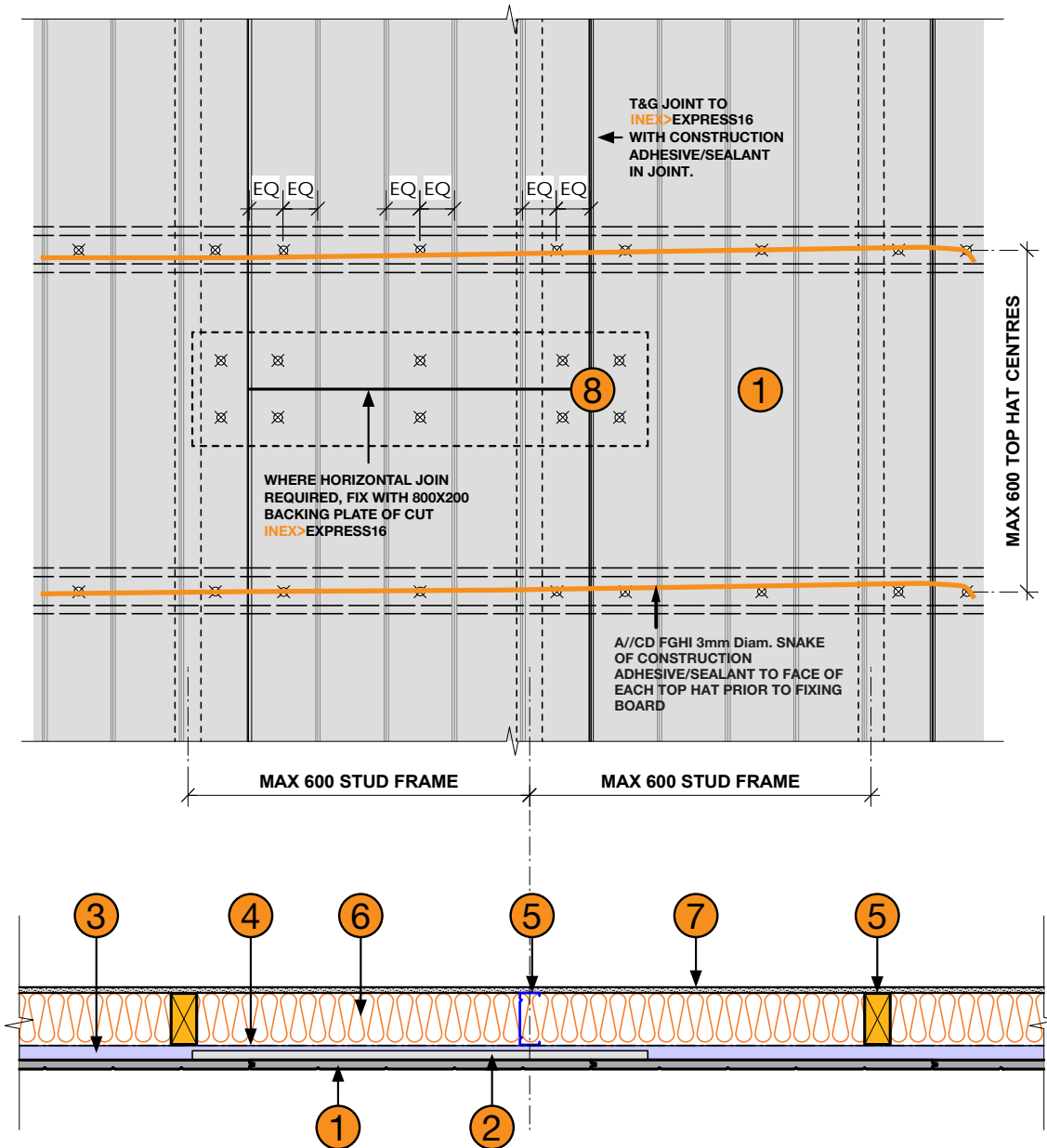
Achieves FRL 60/60/60 from outside only when tested to AS 1530.4-2014
Meets AS 3959-2018 Section 9 (BAL-FZ) via testing to AS 1530.4-2014



| Top Hat Depth (mm) | Rondo Top Hat | Insulation | Internal Lining |
|--------------------|----------------|---------------------|---------------------------------------|
| 25 | M525 | Min. R2.5 Glasswool | Min. 13mm standard grade plasterboard |
| 35 | M535 | | Min. 10mm standard grade plasterboard |
| 40 or greater | M545 or deeper | Any | |

INEX>EXPRESS™

TIMBER OR STEEL FRAME WITH VERTICAL SHEETS: FRL 60/60/60 & BAL-FZ



① INEX>EXPRESS16

② 800x200 Backing plate
(Cut from INEX>BOARDS)

③ Min. 0.75bmt top hats at Max. 600mm centres with depth as per table overleaf

④ Any breathable sarking

⑤ Steel studs at Max. 600mm centres to AS/NZS 4600 or
Timber studs at Max. 600mm centres to AS 1684
(Both drawn)

⑥ Insulation as per table overleaf

⑦ Internal lining as per table overleaf

⑧ 10g Min. class 3 galvanised self driller counter sinking screws
BREMICK SWRC3100352
or
BREMICK vortexfibre SURC3500302

NOTES
Refer also to INEX>EXPRESS Technical Sheet for fixing details